

TRIKES

- Models: 51V(TP), 53V(P), 411(P), 414(P), 415(P)
- Position: Back of the seat on the Warning Label



- Models: 23, 23T, 25
- Position: Front wheel on back of fender (decals)



- Model: 33(P), 34(B,G,P), 34T(TP)
- Position: Main frame on the Warning Label



- Model: 46 and 46G
- Position: On the back of the shield, behind the handlebars (stamp)



- Model: 79/79P
- Position: On the frame, underneath handlebars



- Models: 401, 402, 402P, 403, 403P, 470
- Position: Back of the seat, on the Warning Label

**2**

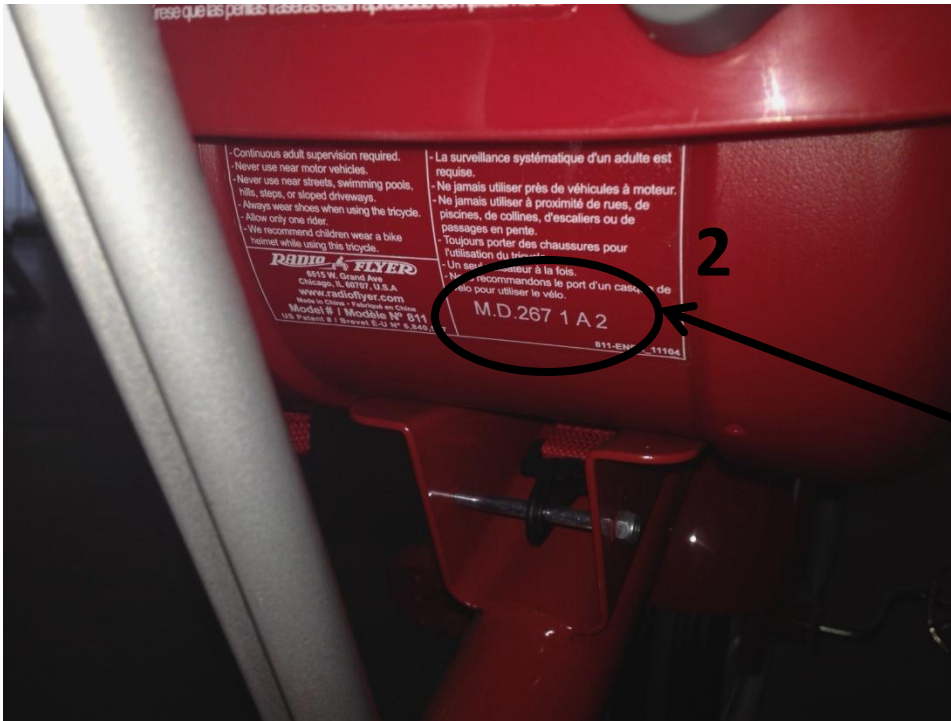
- Models: 440 and 442
- Position: Main frame, decal in front of twist latch



- Model: 445 and 445P
- Position: Side of the rear frame where push handle inserts, on the Warning Label



- Models: 477 (P), 499, 811(P), 816
- Position: Back of the frame, underneath the seat on the Warning Label

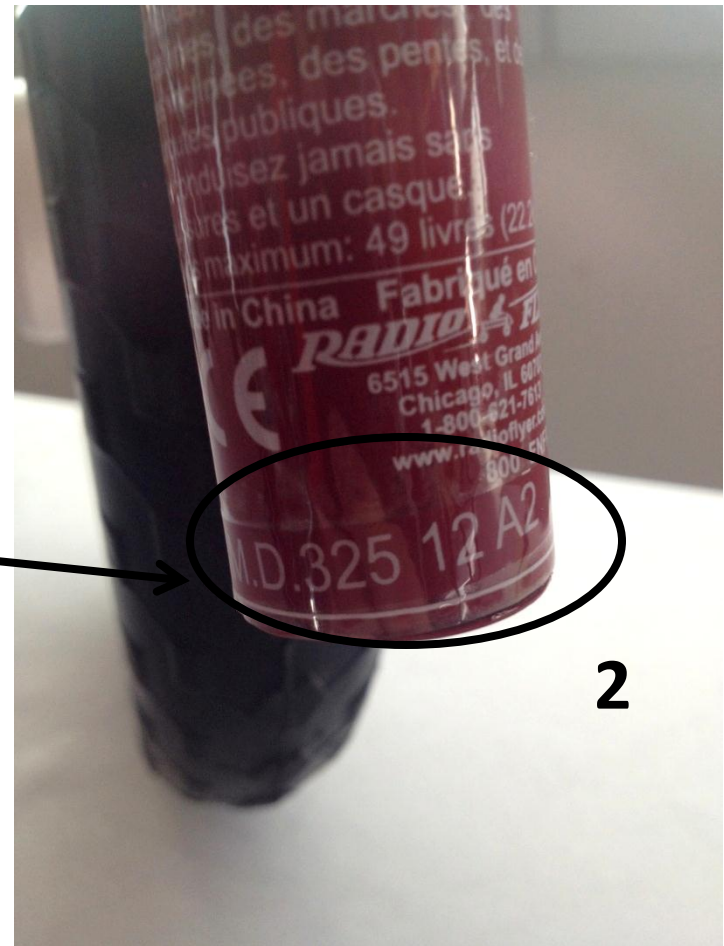


BIKES

- Model: 37/37P
- Position: Main frame, under Warning Label (decals)



-
- A red Radio Flyer balance bike is shown from a side profile. The bike has a white frame with black tires. A black circle highlights the red frame near the rear wheel, and a large black number '1' is placed next to it. The bike has a black seat and red handlebars. The Radio Flyer logo is visible on the frame.

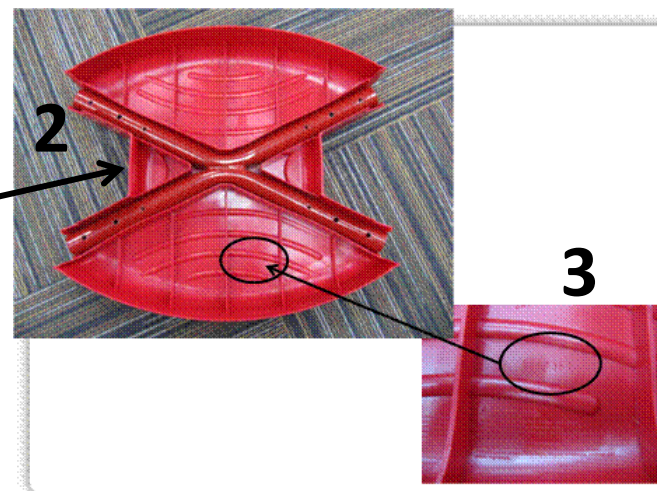


HORSES

- Model: #353P/#354/#353
- Position: Underside of the body, on the Warning Label



- Model: 380 and 381
- Position: Metal frame (Warning Label) **or** underside of step (stamp)

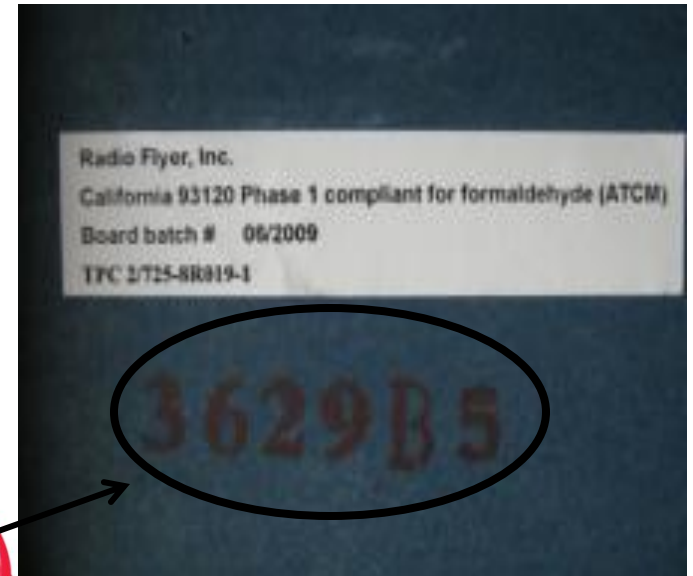


RIDE ONS

- Models: 8 and 909
- Position: Bottom of body on the Warning Label (decal)



- Model: #12
- Position: Bottom of product, near front right wheel (stamp)

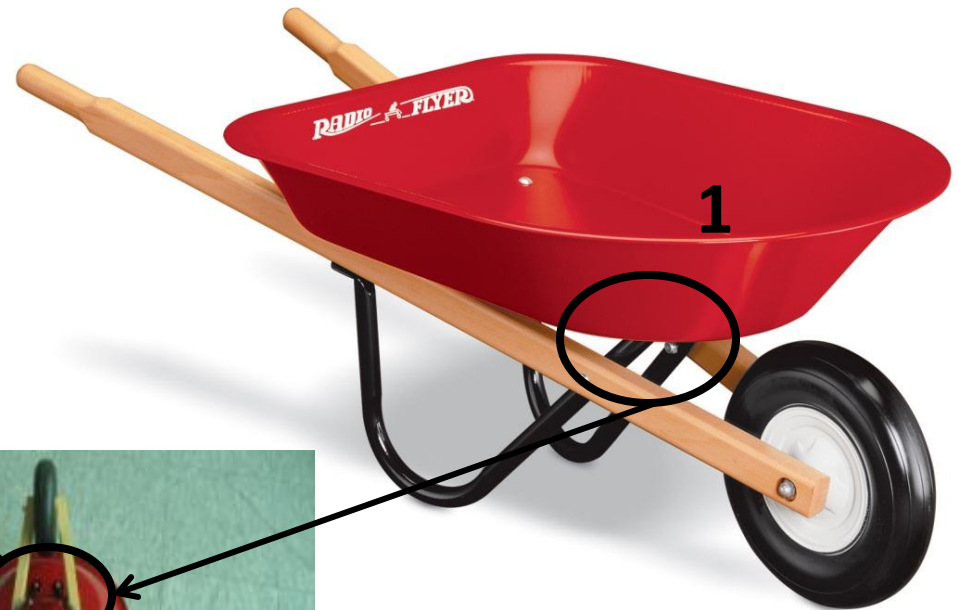
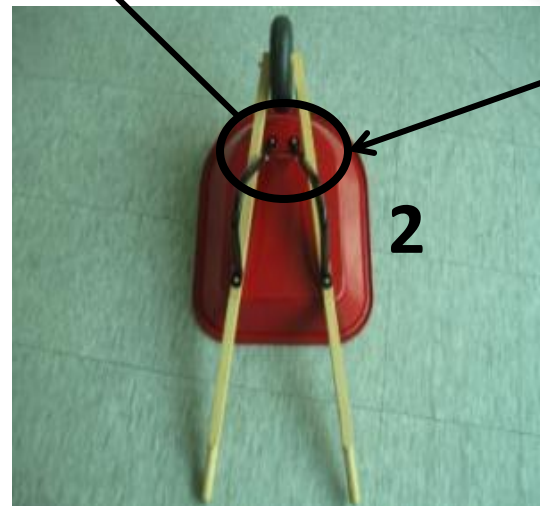
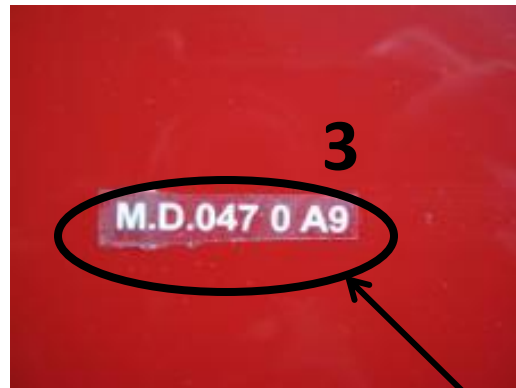


2

- Model: #20
- Position: Side of main frame on Warning Label



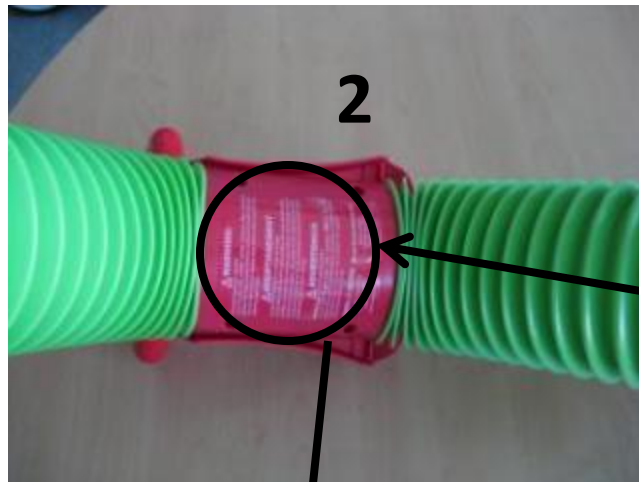
- Model: 40
- Position: Bottom of body (decal)



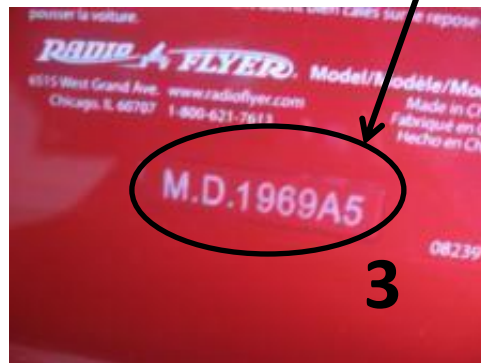
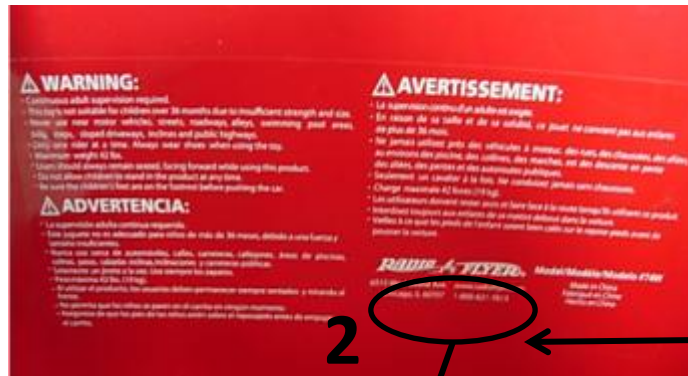
- Model 68
- Position: On the back of trike, on the Warning Label



- Model: 73 and 73P
- Position: Under seat, on the Warning Label



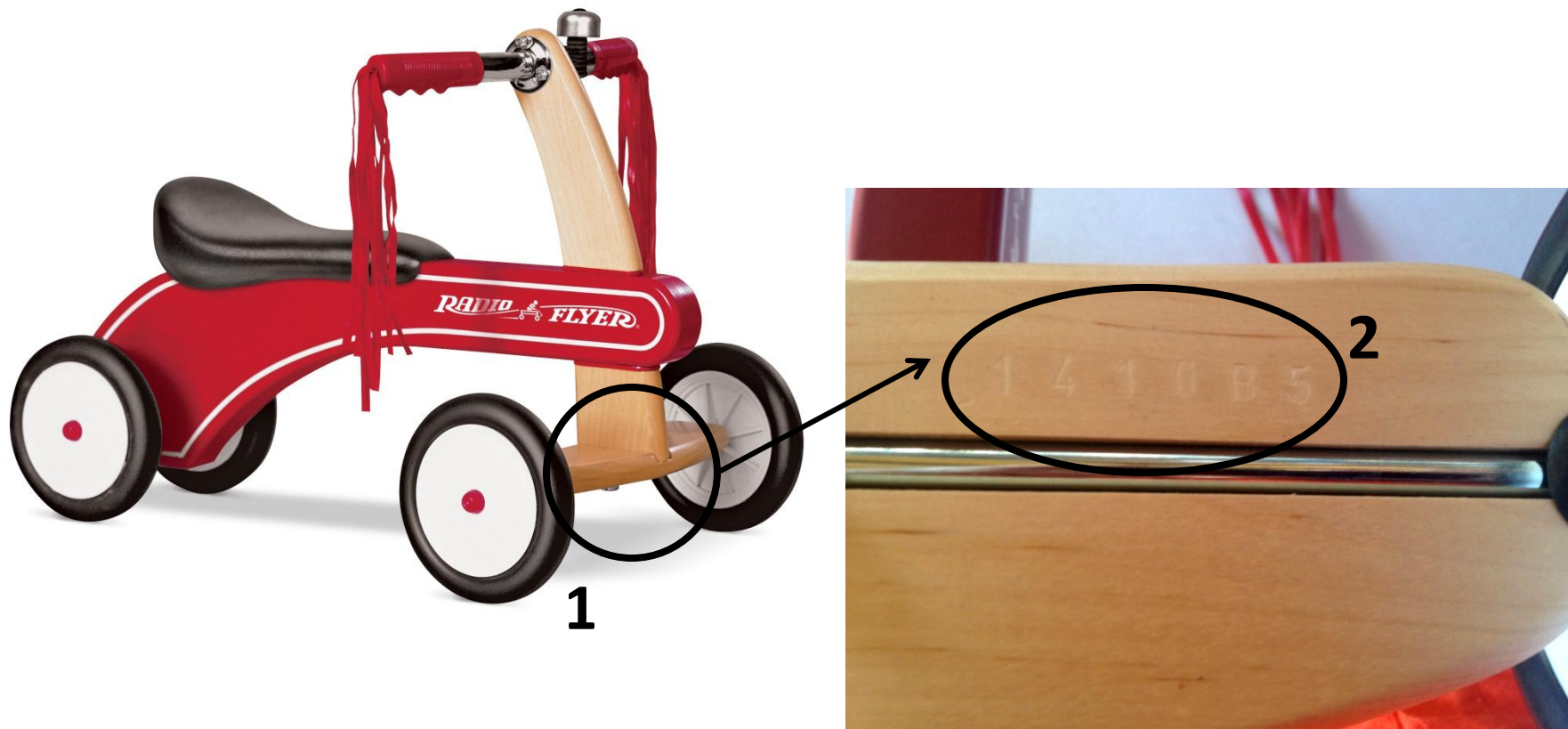
- Model: 74, 74A, 74PA
- Position: Inside coupe, on the Warning Label



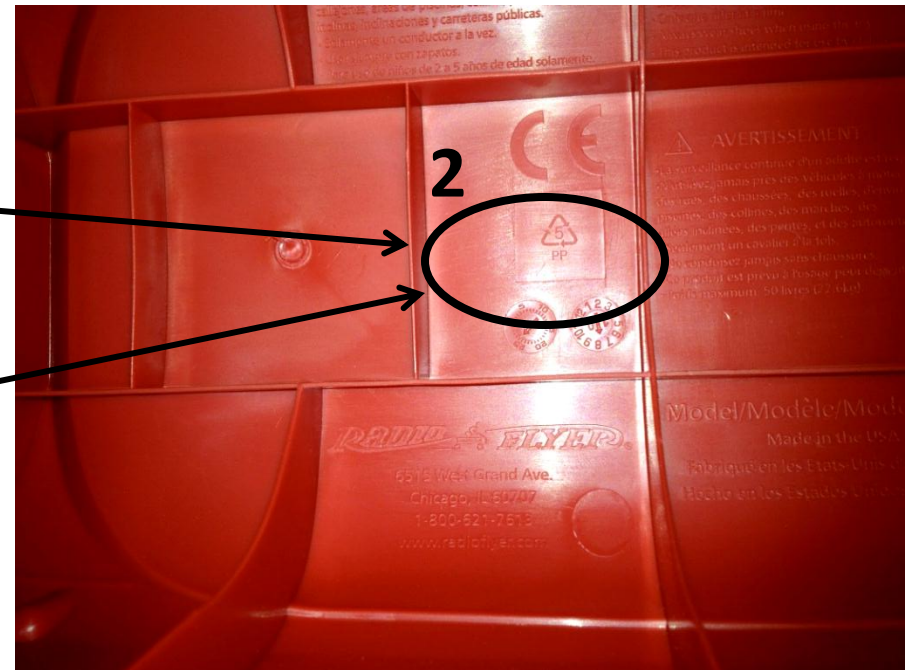
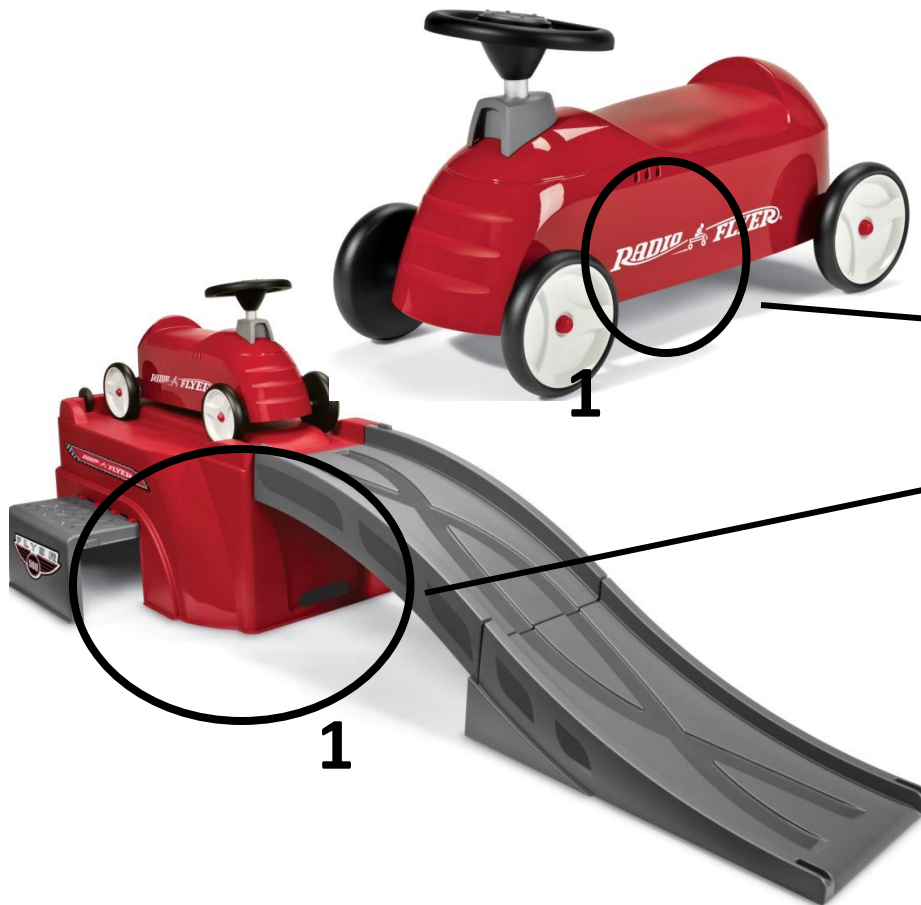
- Model: 312B and 312P
- Position: Underside of product, on the deck side (stamp)



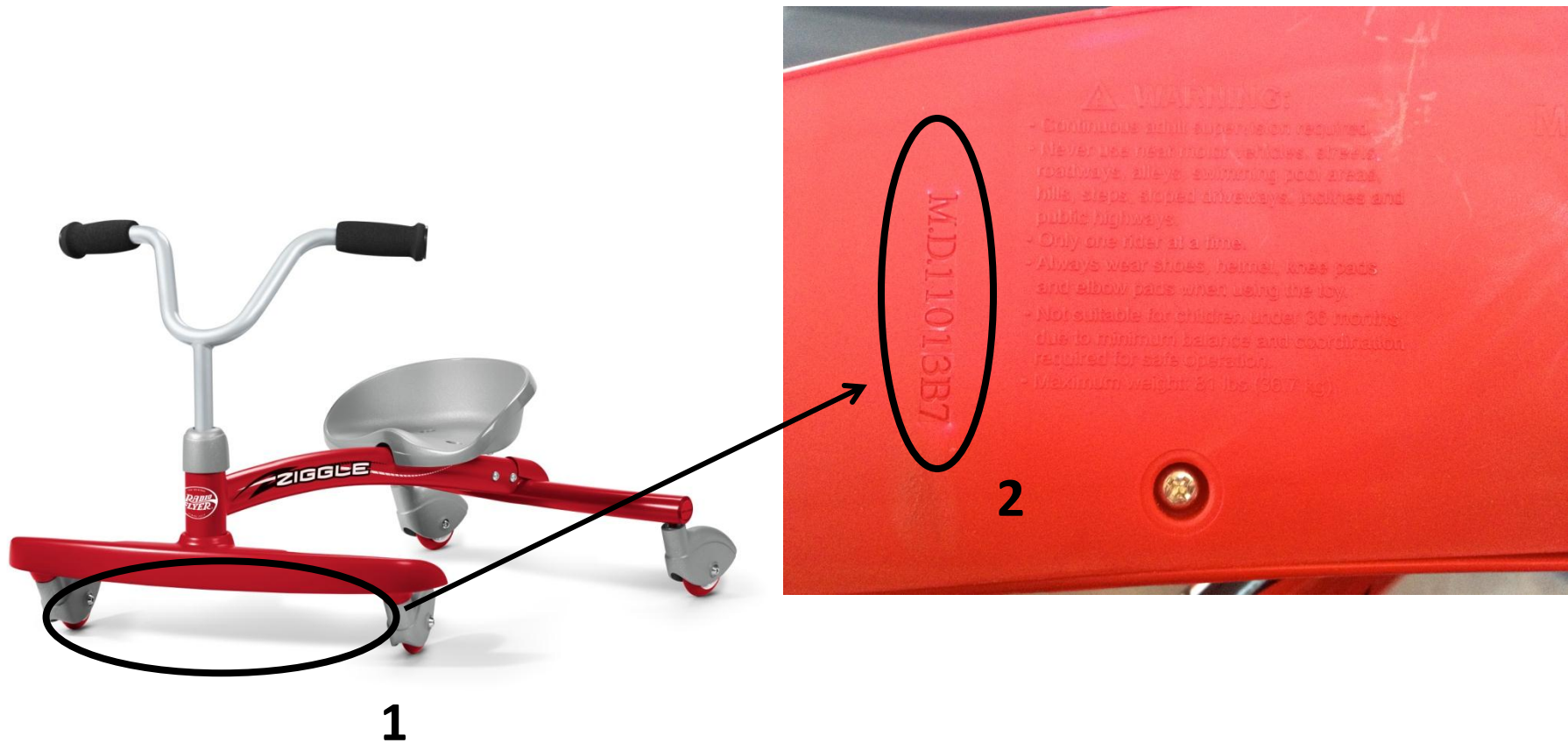
- Model: 320
- Position: On the underside of the front axle, etched into the wood



- Model: 500
- Position: On the underside of car or track base; dial system (reference slide **47** for dial system)



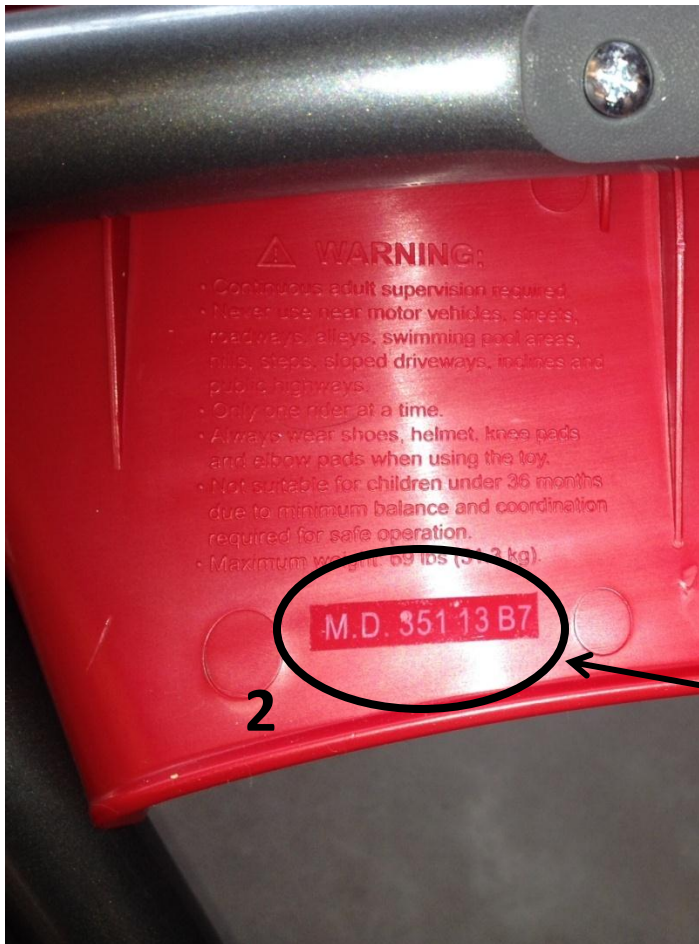
- Model 625 and 625P
- Position: On the underside of the front frame; stamp



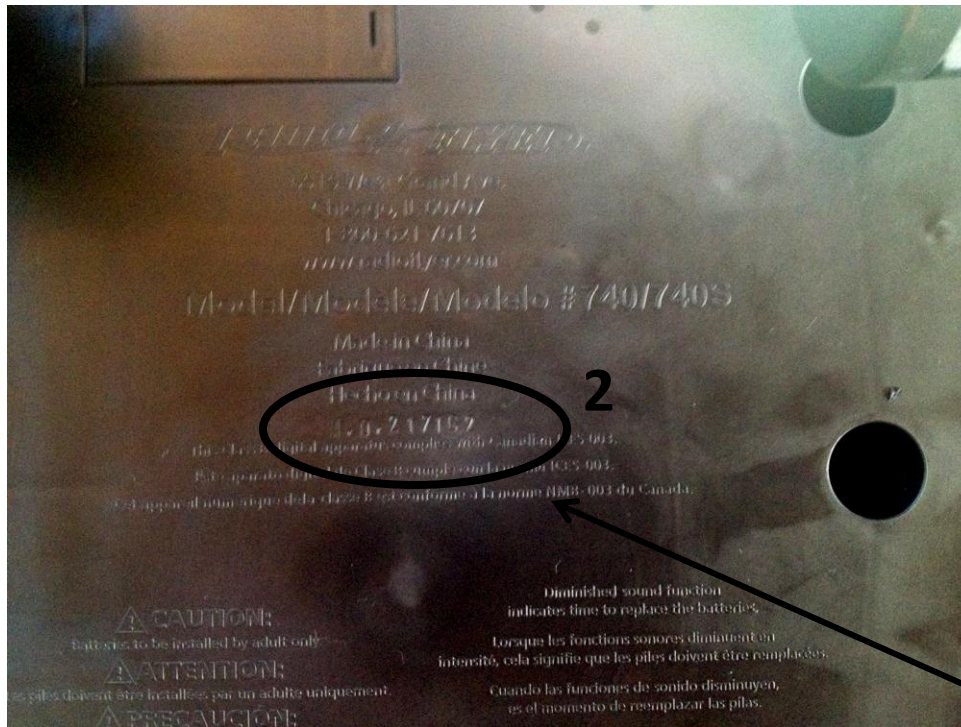
- Model 635/636
- Position: On the underside of the saucer; sticker or dial system.
(reference slide **47** for dial system)



- Model: 640
- Position: On the underside of the footrest (sticker)



- Model: 740
- Position: Underside of Bumper Car; stamp.



SCOOTERS

- Model: 510
- Position: Back side of name plate (decal)



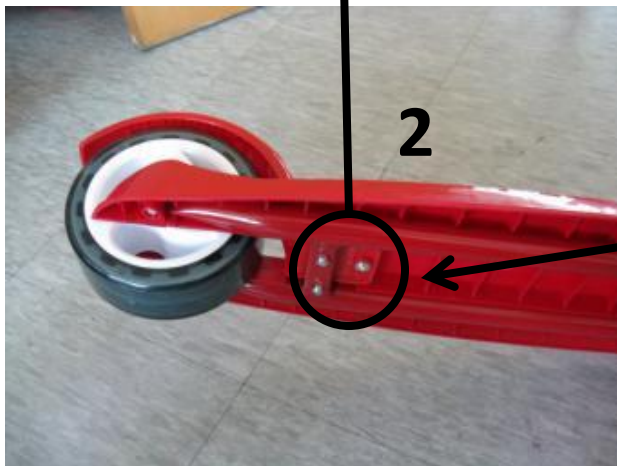
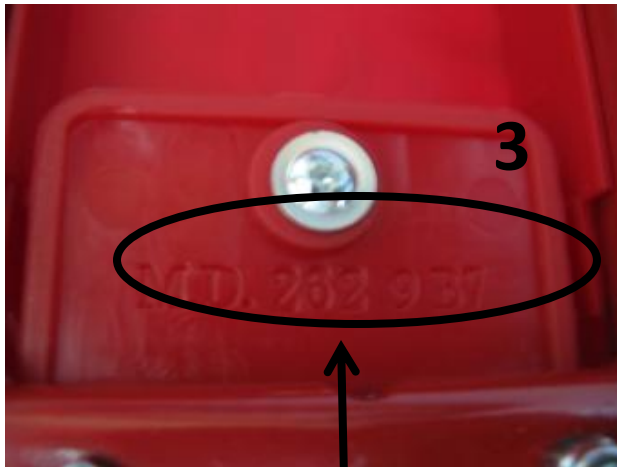
- Models: 517 and 518
- Position: On the underside of the deck, near the front wheel (stamp or decal)



- Models: 534(A, PA), 535(P), 536(P), 539(P), 540(G), 544
- Position: On the underside of the deck, near the rear wheel (stamp)



- Model: 554, 555, 555P, 560
- Position: Bottom of deck, near the rear wheel (stamp)



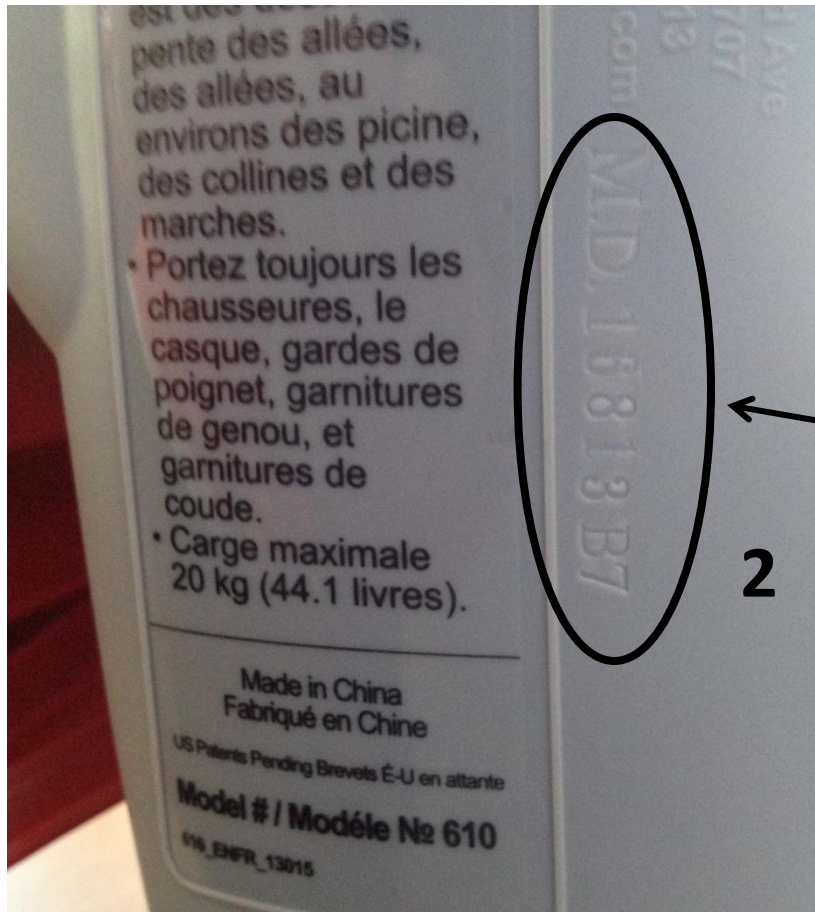
- Model: 545 and 546
- Position: On the underside of deck, under Warning Label (decals)



- Models: 551B, 551P, 552, 553
- Position: On the underside of deck, under the Warning Label (stamp)

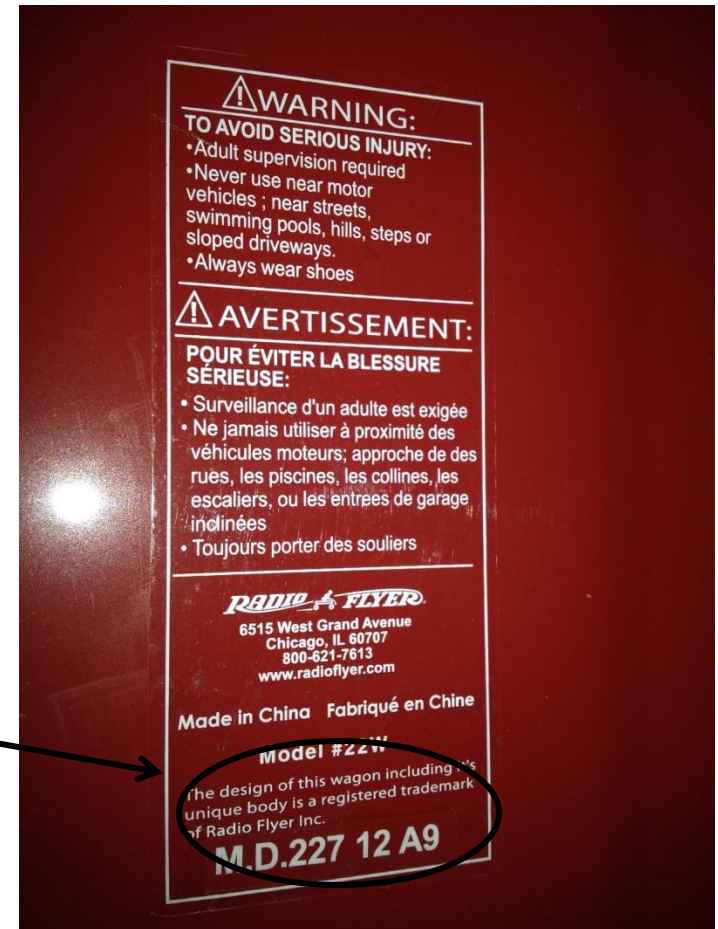


- Model 610
- Position: On the underside of front bolster; stamp



WAGONS

- Model: Steel and Wood Wagons
- Position: Underside of the body of the wagon, on the Warning Label

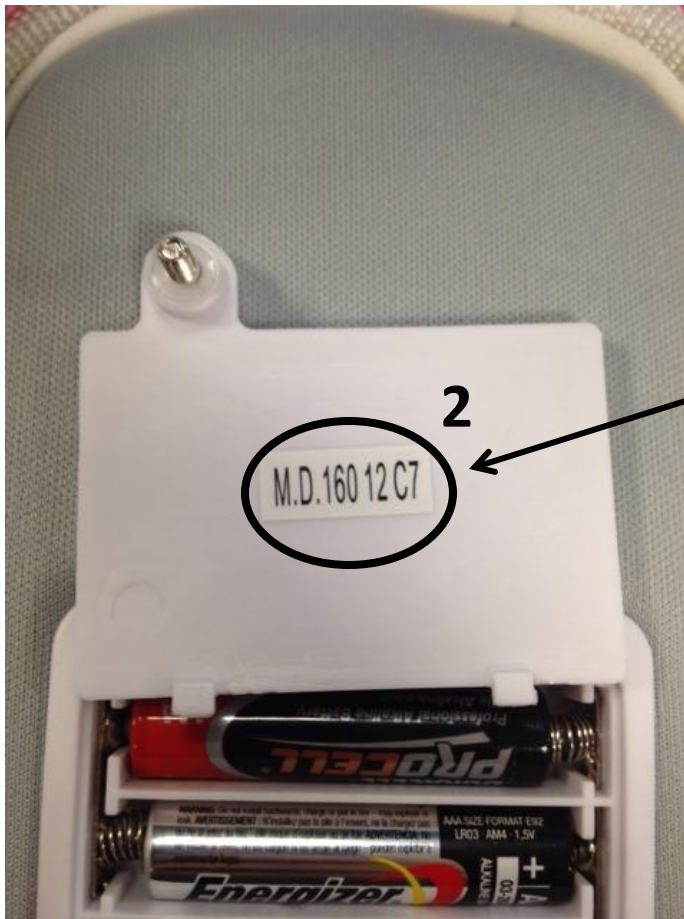


- Model: All Plastic Wagons
- Position: Handle, on the Warning Label

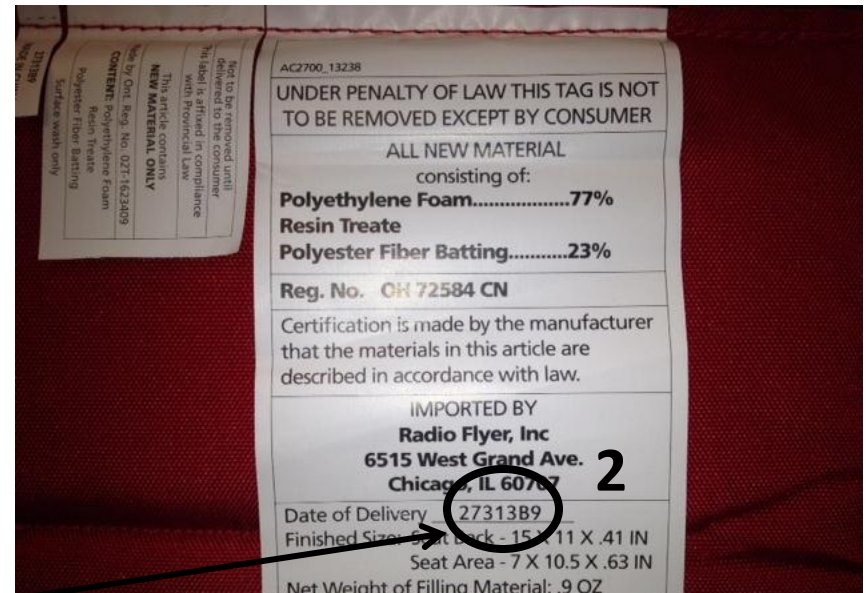


ACCESSORIES

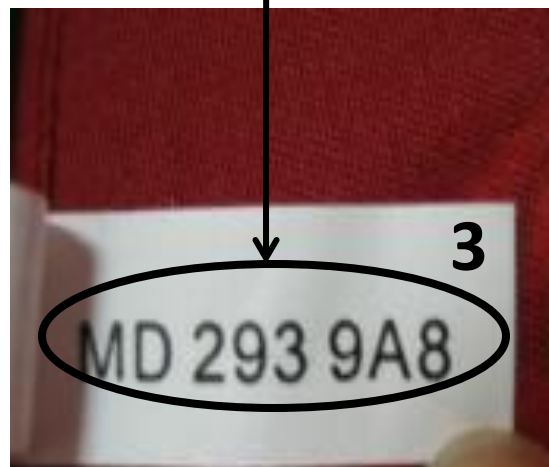
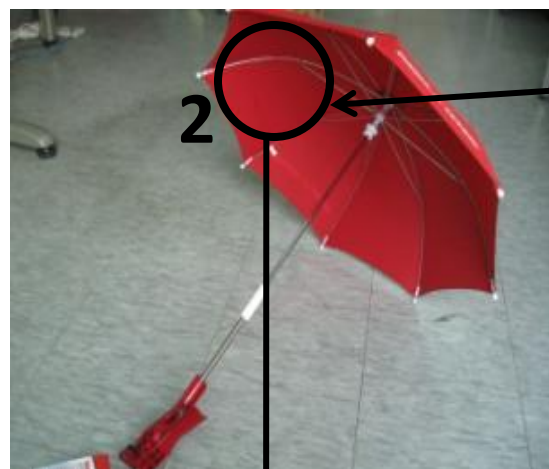
- Model: AC515
- Position: Inside of the speaker, on the interior battery door (sticker)



- Model: AC2700 and AC3100
- Position: Printed on the white label, on the back of the seat pad



- Model: UA18
- Position: Printed on sewing label; inside umbrella



How to Read a Dial System MD Code:

- There will be 2 dials; one listing numbers 1-12 (month) and another listing numbers 1-30 (day).
- The dial with numbers 1-12 will also have another number in the center of the dial (the year).
- There will be an arrow inside of each dial, corresponding to a number.
- You then read the 3 numbers from the two dials, creating a Manufacturing Date.
- Example: By looking at the dials of this product, the Manufacturing Date is 8/26/10

